



Home 2, Deerplay House, Heald Lane,
Bacup, Lancashire OL13 8NZ



PROPERTY DESCRIPTION

!! The perfect family home !! This brand new four bedroom home is found in the ever popular, rural setting of Weir and boasts incredible long distance views onto the surrounding countryside. The home has never been occupied and boasts an array of brand new fixtures and fittings, along with accommodation spread of three storeys and comprising of: an eye catching open plan sitting room and kitchen, four well proportioned bedrooms - the main bedroom benefitting from an en-suite shower room and a walk in wardrobe, and a brand new four piece bathroom suite. The tenant will also benefit from the solar panels that have been installed, the 'run off' from which will be benefiting the tenant and will reflect favourably on their energy bills. Allocated parking. EPC - TBC. Council Tax - TBC. Early viewing is considered a must!

FEATURES

- The perfect first home
- Brand new four bedroom home
- Popular rural setting
- Long distance views onto the surrounding countryside
- The property has never been occupied!
- Open plan sitting room and impressive fitted kitchen
- Four generous bedrooms
- The main bedroom benefitting from a walk in wardrobe and an en-suite shower room
- Eye catching modern bathroom suite
- The property benefits from solar panels
- Allocated parking
- Council Tax - TBC
- EPC - TBC
- Early viewing is a must!



ROOM DESCRIPTIONS



Deer play House 2

Approximate Gross Internal Floor Area = 120.3 sq m / 1295 sq ft

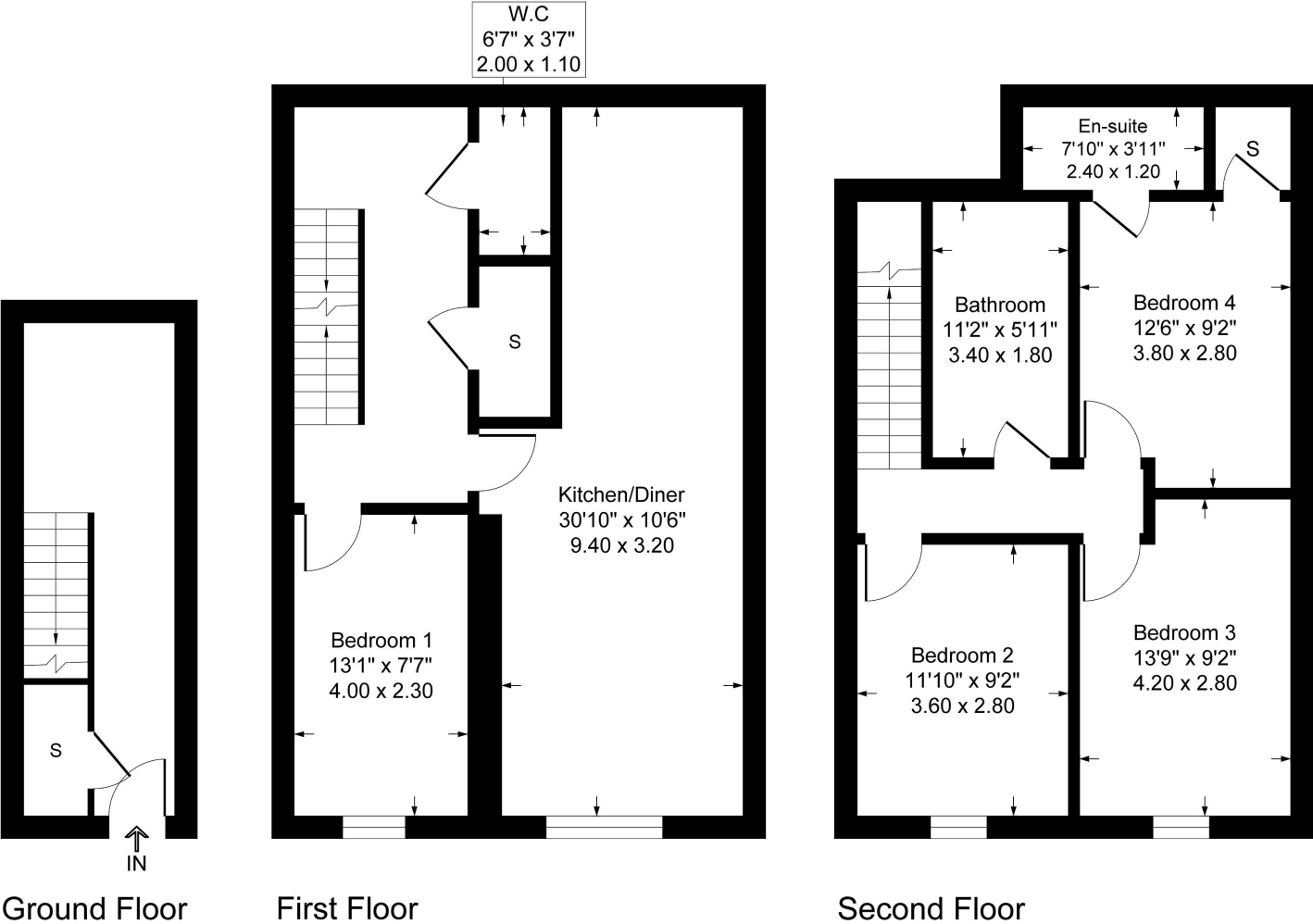


Illustration for identification purposes only, measurements are approximate, not to scale.