



Home 3, Deerplay House, Heald Lane,
Bacup, Lancashire OL13 8NZ



PROPERTY DESCRIPTION

!! The perfect family home !! This brand new four bedroom home is found in the ever popular, rural setting of Weir and boasts incredible long distance views onto the surrounding countryside. The home has never been occupied and boasts an array of brand new fixtures and fittings, along with accommodation spread of three storeys and comprising of: an eye catching open plan sitting room and kitchen, four well proportioned bedrooms and a brand new four piece bathroom suite. The tenant will also benefit from the solar panels that have been installed, the 'run off' from which will be benefiting the tenant and will reflect favourably on their energy bills. Allocated parking. EPC - TBC. Council Tax - TBC. Early viewing is considered a must!

FEATURES

- The perfect family home
- EPC - TBC
- Council Tax - TBC
- Deposit £1250
- Early viewing a must!



ROOM DESCRIPTIONS



Deerplay House 3

Approximate Gross Internal Floor Area = 122.2 sq m / 1316 sq ft

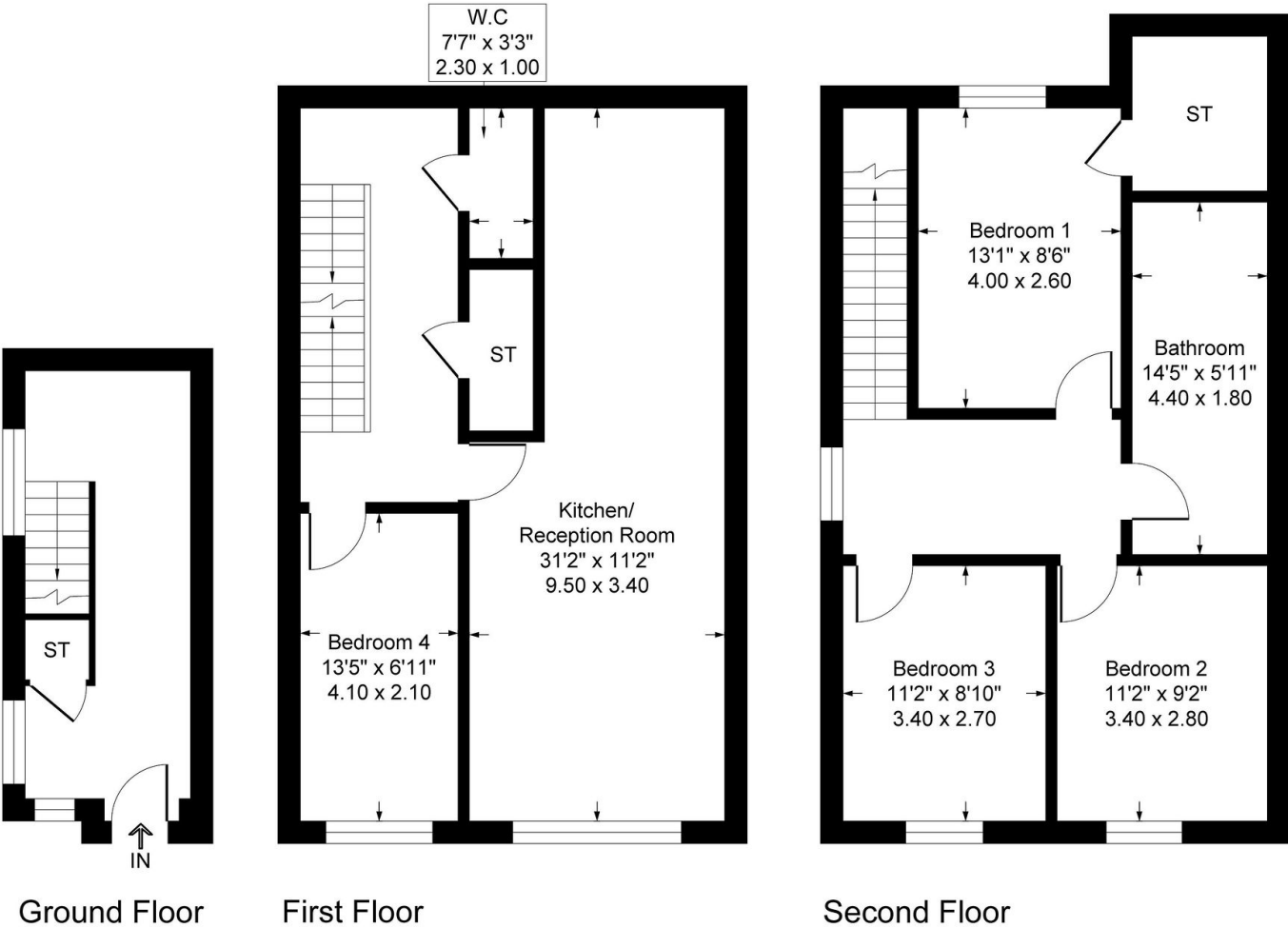


Illustration for identification purposes only, measurements are approximate, not to scale.