

20 Russell Court, Burnley, Lancashire
BB11 3JN



PROPERTY DESCRIPTION

New to the market, we offer a 3 bedroom mews house situated on the outskirts of Burnley Town Centre.

With an entrance hallway, leading to a living room and fully fitted kitchen with integrated oven & hob.

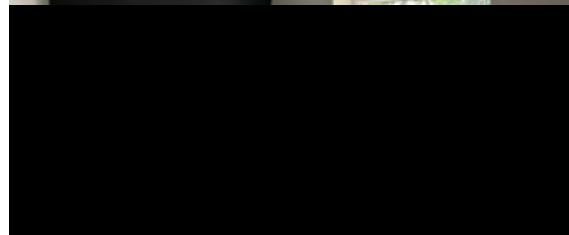
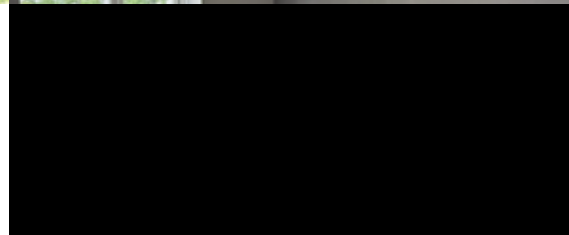
To the first floor, 1 double bedroom, 2 single bedrooms and 3 piece bathroom suite with shower over bath.

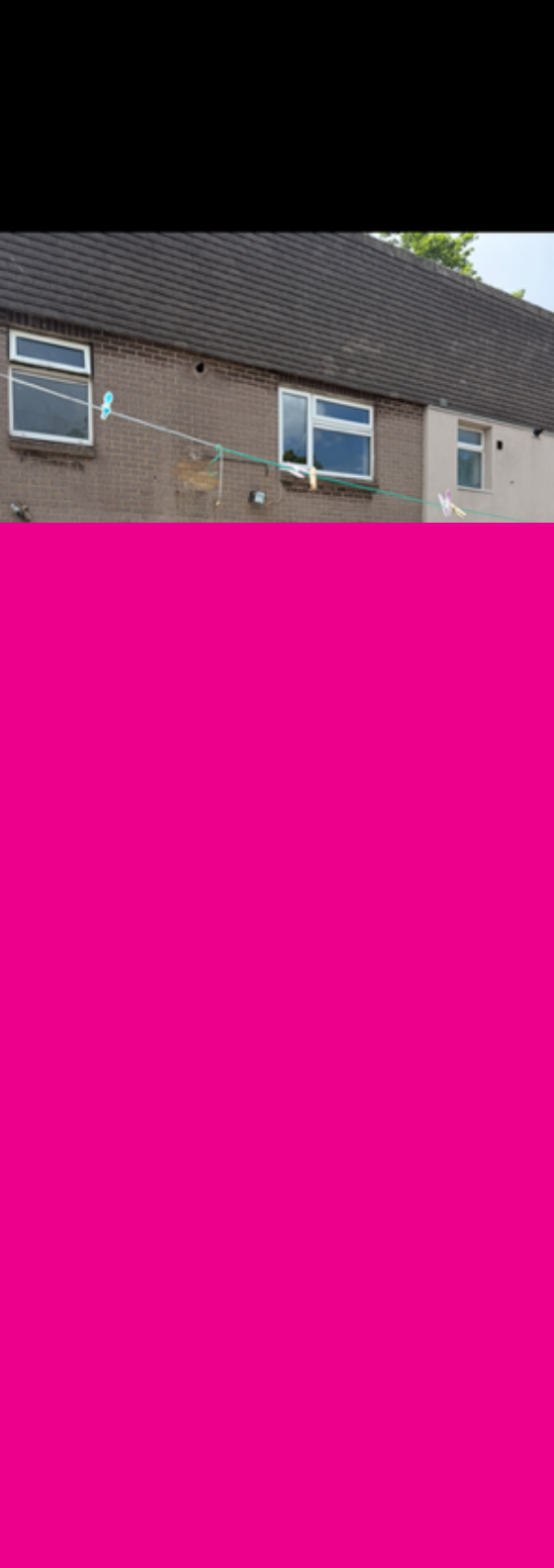
Externally, the property benefits from a garden to the rear.

Fees apply :-

Rent in advance @ £825

Deposit in advance @ £825





ROOM DESCRIPTIONS

Ground floor

Entrance hallway

Living room

Kitchen

First floor

Bedroom 1

Bedroom 2

Bedroom 3

Bathroom

External

Rear garden

