



154 Briercliffe Road, Burnley, Lancashire. BB10 2NZ

- Rent in advance @ £625
- Deposit in advance @ £625
- Council Tax / A
- EPC / E



PROPERTY DESCRIPTION

Renovated throughout, we offer a modern, 2 bedroom duplex apartment situated on the ever popular Briercliffe Rd, Burnley.

With a ground floor entrance leading to the first floor comprising of a living room, a fully fitted kitchen with integrated oven & hob and 3 piece bathroom suite with shower over bath.

To the second floor, two bedrooms.

Rent in advance @ £625

Deposit in advance @ £625

Council Tax/A

EPC/E



ROOM DESCRIPTIONS

Ground floor

Entrance to apartment

First floor

Living room

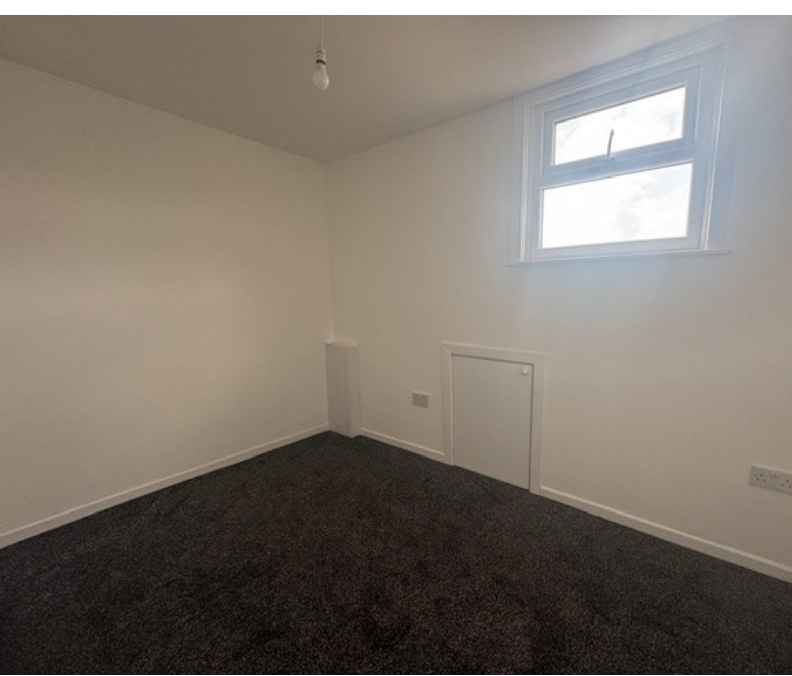
Kitchen

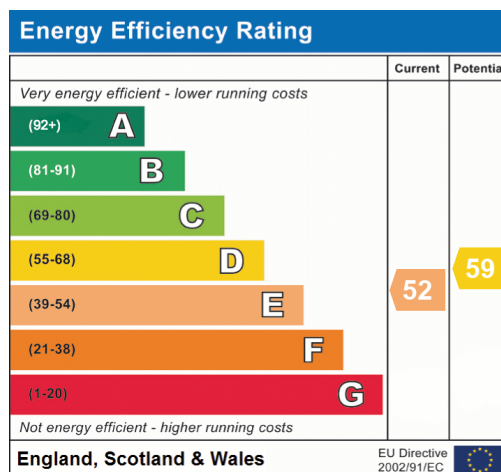
Bathroom

Second floor

Bedroom 1

Bedroom 2





Burnley
31, Parker Lane, Burnley, BB11 2BU
01282 427445
info@jonsimon.co.uk