

£189,995
Leasehold



JON SIMON
ESTATE AGENTS



Features

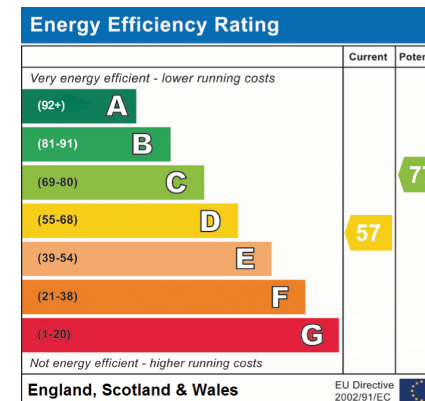
- Sold with No Chain!
- Spacious end terrace
- Renovated throughout
- Downstairs WC
- Two generous reception rooms
- Utility room

Summary of Property

JonSimon are delighted to bring to the market this well presented three bedroom end terrace, situated on the ever-popular Ainsworth Road in Radcliffe. The property has been newly renovated throughout, offering stylish and modern living accommodation that's ready to move straight into. Featuring a corner plot position with a wrap around garden, easily accessible to transport links, local schools and amenities within walking distance.

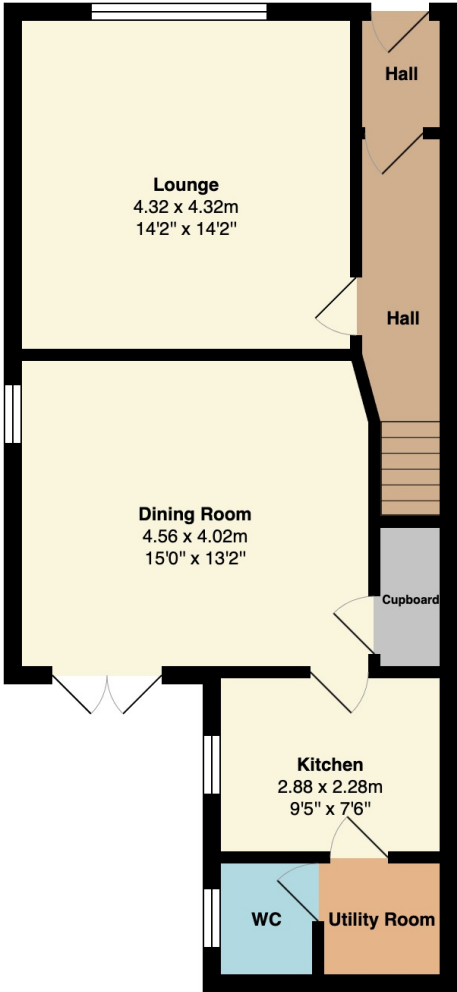
The property briefly comprises; large entrance hallway with original features, modern spacious lounge, bright and airy dining room with patio doors, kitchen, utility room and guest WC. To the first floor, a brand new four piece bathroom suite, two large double bedrooms and a spacious single bedroom.

Externally the property benefits from a low maintenance yard with access gate for on-street parking. Sold with no onward chain! Perfect for anyone looking for a newly renovated home they can move straight into!

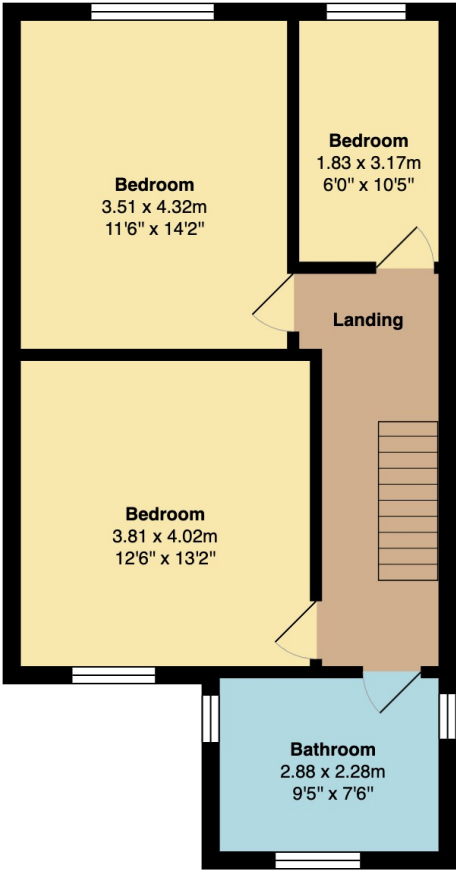


Room Descriptions





Ground Floor
Area: 58.4 m² ... 629 ft²



First Floor
Area: 53.8 m² ... 579 ft²

Total Area: 112.2 m² ... 1208 ft²