

# 448 Brunshaw Road, Burnley, Lancashire. BB10 3HX

- Rent | in advance @ £975
- Deposit | in advance @ £975
- EPC | D
- Council Tax | A
- Parking | rear driveway
- Utilities | Mains
- Flood risk | Low





## PROPERTY DESCRIPTION

| New to the market |

Situated on the ever popular Brunshaw Road, Burnley, we offer a spacious throughout, 4 bedroom mid terrace property.

With a forecourt front and entrance hallway, leading to the front reception room, a further generously sized rear reception room and modern, fully fitted kitchen with integrated oven/hob.

To the first floor, the first three bedrooms and a family bathroom with shower over bath.

To the second floor, the main bedroom with en suite.

Externally, a gated forecourt to the front. To the rear, a flagged driveway and garden with decked seating area.

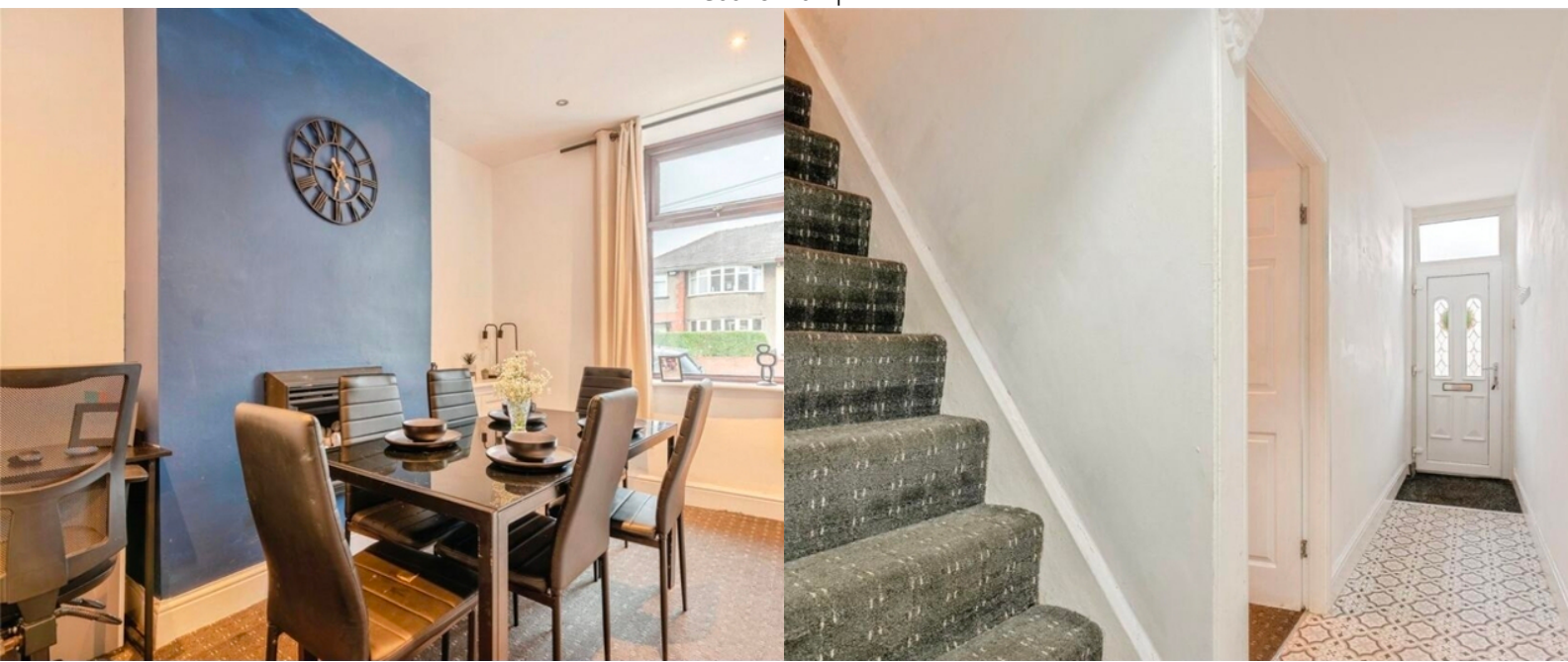
| fees apply |

Rent | in advance @ £975

Deposit | in advance @ £975

EPC | D

Council Tax | A



## ROOM DESCRIPTIONS

---

### Ground Floor

Entrance Hallway

Sitting Room

Lounge

Extended Kitchen

### First Floor

Bedroom One

Bedroom Two

Bathroom

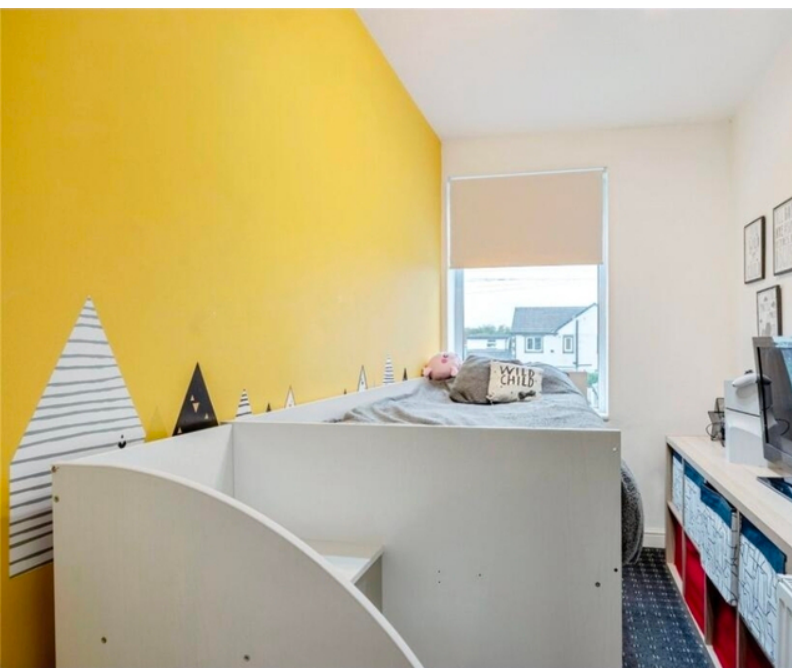
### Outside

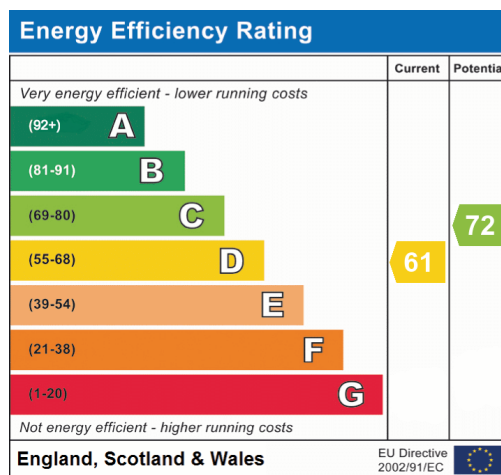
#### Yard

Immediately located at the rear of the property and being low maintenance.

#### Garden/Off Road Parking

Located across the rear access road the rear garden boasts a laid lawn, enclosed panel fencing and a hard standing area currently used as off road parking.





Burnley  
31, Parker Lane, Burnley, BB11 2BU  
01282 427445  
info@jonsimon.co.uk