



# 28 Hornby Street, Burnley. BB11 3AS

- Rent | in advance @ £650
- Council Tax | A
- Deposit | in advance @ £650
- EPC | C



## PROPERTY DESCRIPTION

---

Spacious throughout, we offer a 3 bedroom mid terrace situated on the outskirts of Burnley Town Centre, close to all public transport routes & amenities. With an entrance vestibule, two reception rooms with feature fireplace & surround, modern fully fitted kitchen with integrated oven/hob and an enclosed yard to the rear. To the first floor, 1 double bedroom, 2 good size single bedrooms and bathroom with 3 piece suite & shower over bath.

Rent | in advance @ £650

Deposit | in advance @ £650

EPC | C

Council Tax | A



## ROOM DESCRIPTIONS

---

### GROUND FLOOR

Entrance Vestibule

Living Room

Dining Room

Kitchen

### FIRST FLOOR

Master Bedroom

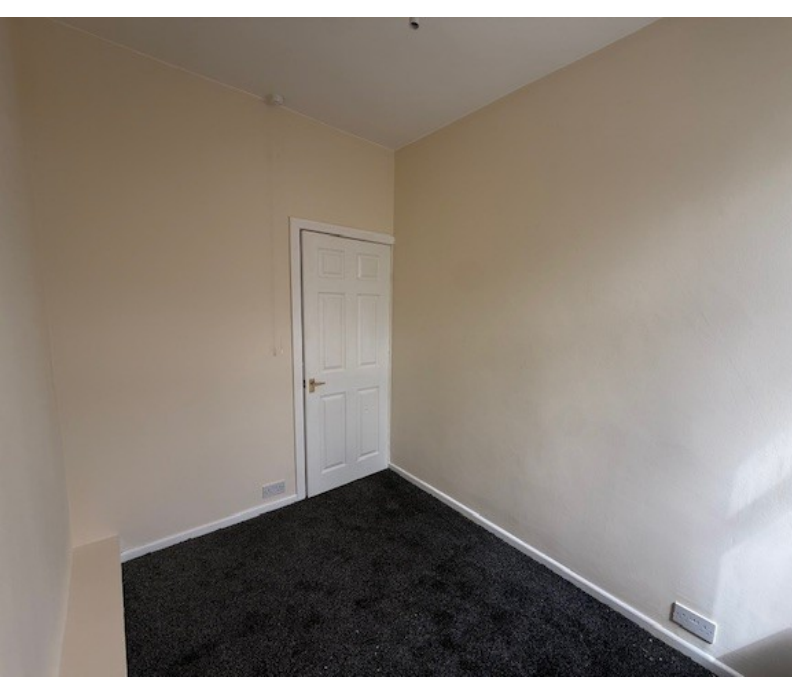
Second Bedroom

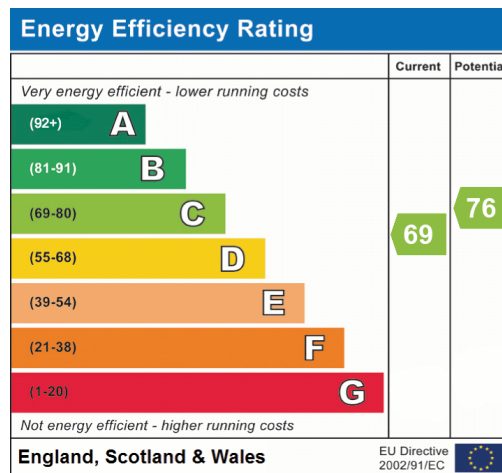
Third Bedroom

Bathroom

### EXTERNAL

Enclosed Yard





Burnley  
31, Parker Lane, Burnley, BB11 2BU  
01282 427445  
info@jonsimon.co.uk